



## Don't just monitor air quality, improve it

EMSOL empowers organisations to take steps every day to make a lasting difference reducing transport pollution.

### Taking control over emissions is difficult.

Compliance teams are under-resourced and over-worked, stuck behind the curve with unspecific and retrospective emissions breach data. Even the latest, most expensive monitoring systems aren't fit for purpose - monitoring air quality doesn't improve air quality.

Imagine if instead, teams could get real-time, specific evidence about emissions breaches delivered straight to their mobile. So they can pinpoint the problem the moment it becomes a problem, and take specific steps to improve air quality.

That's EMSOL.

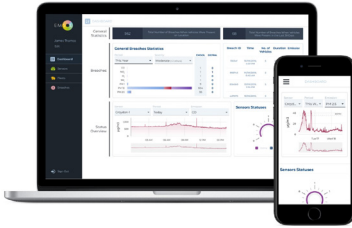
### Some of our clients



## EMSOL empowers small teams to make a big difference.

- Delivers specific, granular evidence to support enforcement
- Enables precise, targeted action to reduce emissions every day
- Simplifies compliance - makes it easier to achieve environmental targets
- Smooths the relationship between business and local authorities
- Pre-empts and safeguards against tougher future regulations
- Unlocks value from legacy monitoring hardware investments

## How does EMSOL work?



Cross-site, cross-fleet and cross-authority views based on access rights

### Flexible information presentation and notifications

Powerful, flexible dashboards with ad-hoc reporting and real-time notifications.

### Powerful Data Analysis and Insights - Secure data fusion and aggregation

Real-time pollution and asset location data aggregation and analysis

### Owned and open source data ingestion

Flexible, open and secure data acquisition



Air Quality Monitors



Noise Monitors



Onboard Vehicle Tracking/ Telematics



Other External Data Feeds

## Do you want to learn more?

Our air quality experts are ready to help you achieve your emissions targets!

Check out our website at [www.emsol.io](http://www.emsol.io) or email us at [sales@emsol.io](mailto:sales@emsol.io)